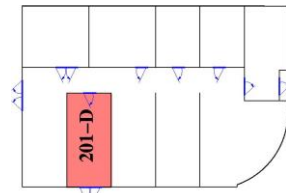


DI Water in Service Bay



To Turn ON DI Water System:

- A) OPEN CITY WATER VALVE (YELLOW)
- B) OPEN DI WATER VALVES (RED)
- C) TURN ON RECIRCULATION PUMP
- D) WAIT FOR GREEN RESISTIVITY INDICATOR BEFORE USING DI WATER

To Turn OFF DI Water System:

- A) TURN OFF RECIRCULATION PUMP
- B) CLOSE DI WATER VALVES (RED)
- C) CLOSE CITY WATER VALVE (YELLOW)

NOTE: THE DI WATER SYSTEM MUST BE SHUT OFF AT THE END OF EVERY WORK/LAB SESSION



City Water Valve
(OPEN Position)



DI Water Valves
(OPEN Position)



Recirculation Pump Switch
(ON position)



Resistivity Monitor
(Ready Indicated)

**DO NOT USE
DI-WATER
IF BOTH WATER TANK
LEDs ARE ORANGE**

